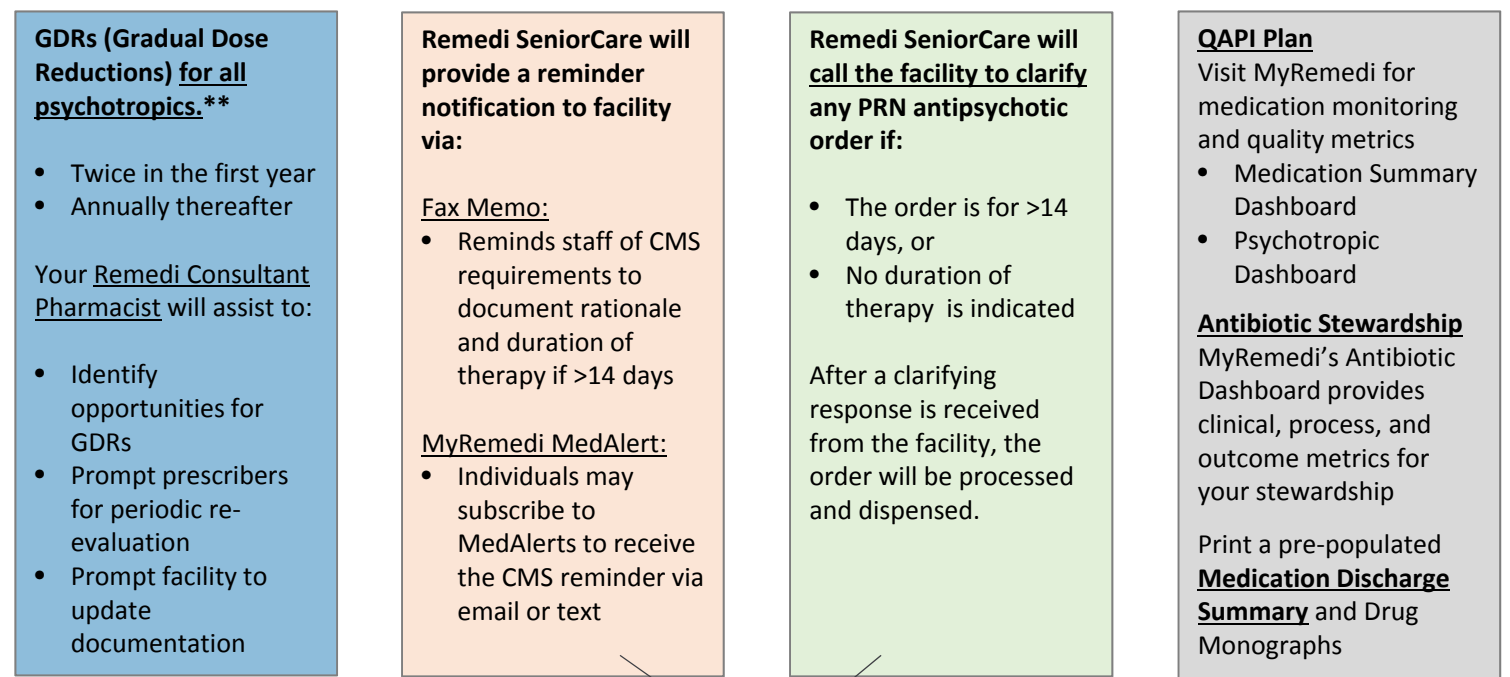
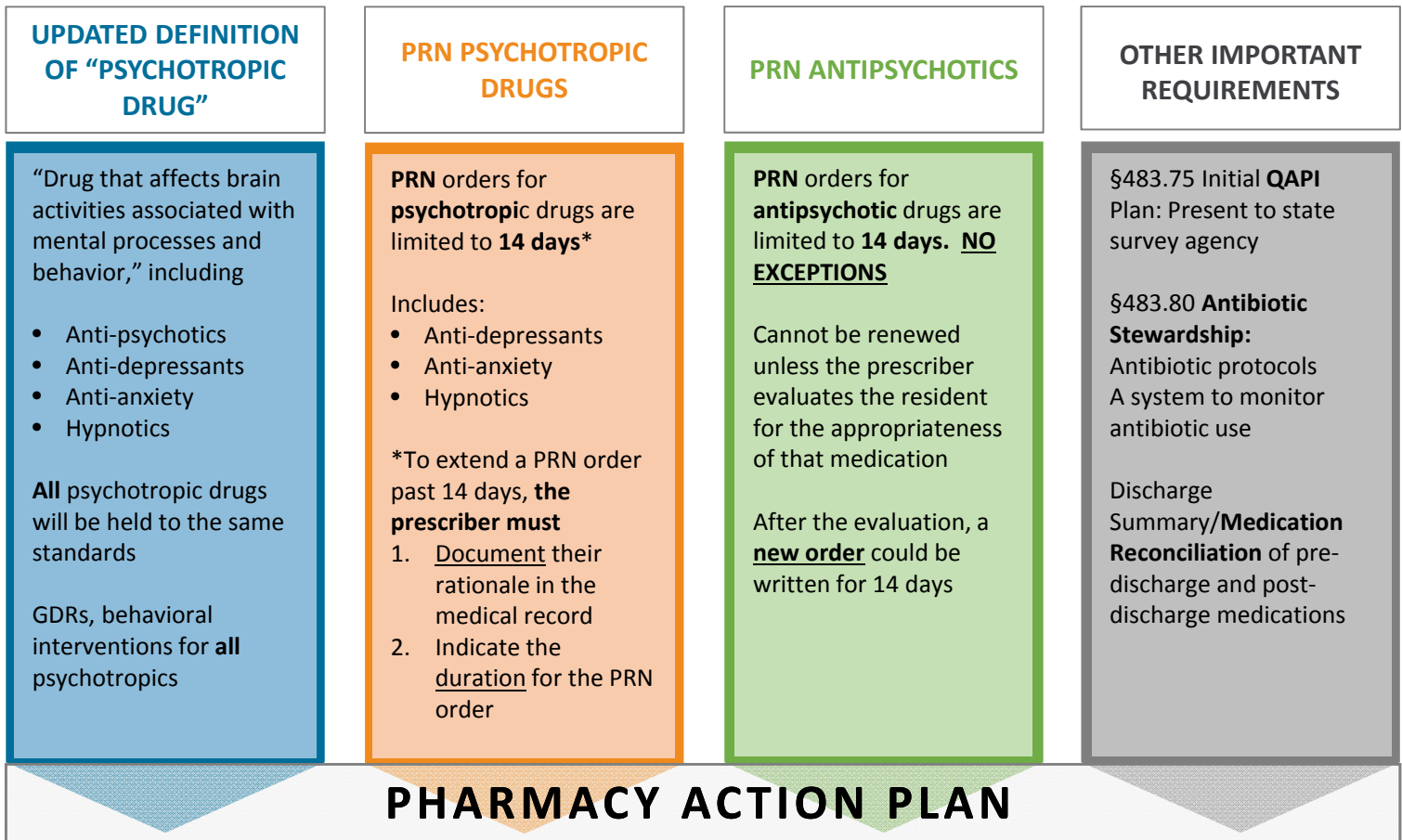


CMS REFORM OF REQUIREMENTS FOR LONG-TERM CARE FACILITIES: IMPACT ON PHARMACY SERVICES: PHASE 2 – BEGINS 11/28/17

- The Medicare and Medicaid Programs Reform of Requirements for Long-Term Care Facilities include several changes to Pharmacy Services for Phase 2
- General requirements and Pharmacy Action Plan are found below



Real-time data, metrics and order information can be accessed from the Psychotropic Dashboard in MyRemedi